

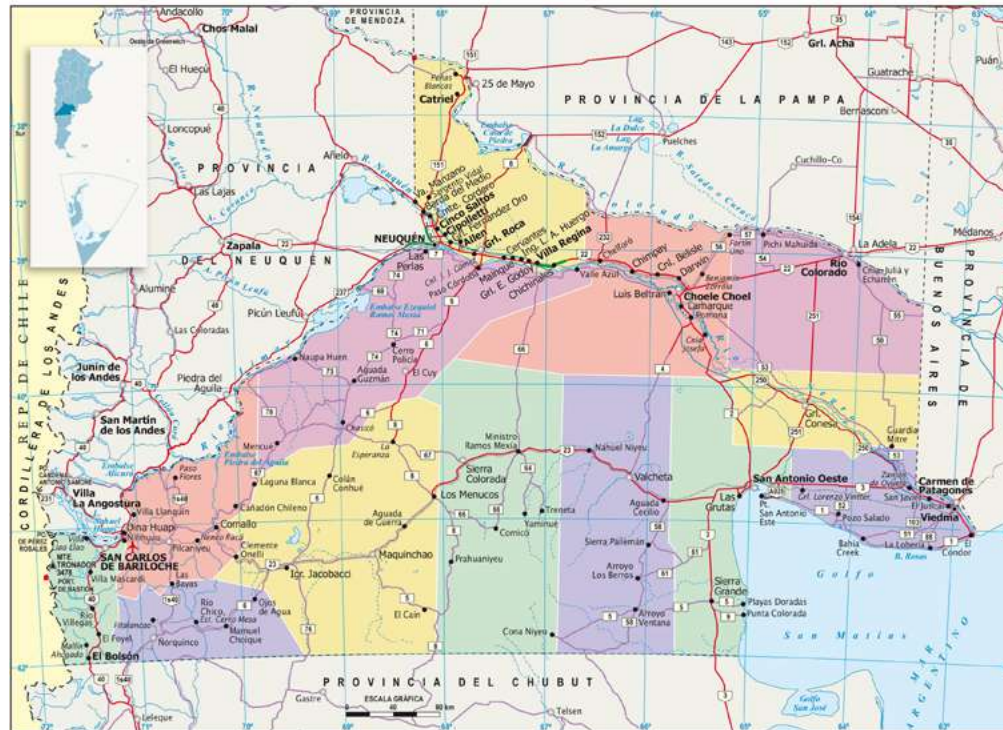
CHACABUCO

03.2020

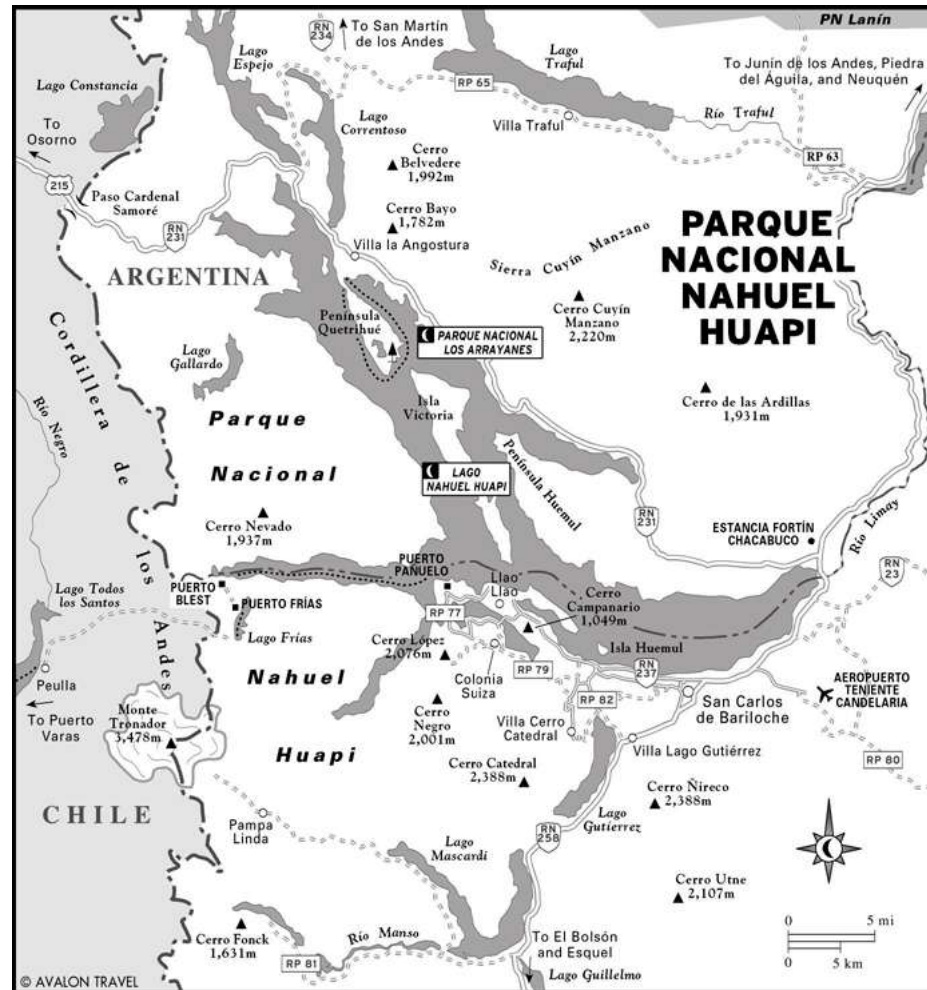


40°33'45.1"S 71°07'00.4"W

NORTHERN PATAGONIA



Northern Patagonia comprises Neuquén and Río Negro, plus northwesterly parts of Chubut. While most of Argentine Patagonia is arid steppe, the densely forested sector near the Chilean border boasts numerous national parks. San Carlos de Bariloche is the country's playground for hiking, skiing, rafting, kayaking, and fly-fishing.



HUNTING AREA

The National Park of “Nahuel Huapi” and “Chacabuco” west of Saint Martin of the Andes and up to the Chilean border. We are slightly north of San Carlos de Bariloche. From an altitude of 1000 m where the vegetation is still fairly dense up to almost 2500 meters where open spaces are the rule, the territory presents a variety of biotope very favorable to deer and above all fascinating to hunt.



ALEXANDRE ERAUD

Passionate about photography and hunting, Alexandre decides to organize a trip in Argentina to go and hunt the red stag of the Andes cordillera.

Alexandre is looking for a real authentic hunt cut off from all communication in our current world. Lost in nature a come back to the base of the hunt and the natural approach with natural wild animals.

This exploration inspires a passion which is growing; this the beginning of a long series of expeditions always in a wild and preserved nature.

Hope you will like this photographic report.



CHARLES ERAUD

Passionate about landscape and hunting, he decides to join his brother in this extraordinary adventure. Cut off from all civilizations for 10 days. It is a challenge that he accepts immediately.



THE HUNT

The Andean red deer is a deer of European origin introduced to Argentina at the end of the XIX century. He adapted to it particularly well and now lives in the wild in the Andes. The populations are vigorous and it is common to meet very good deer. In this case, not only is the trip an unforgettable adventure and experience, but the value for money of the stay becomes excellent if we had to compare prices with the same deer shot in Eastern Europe.



HUNTING METHOD

Argentinian deer are hunted on approach. Horses are used to increase the range of action of hunters. In the mountains, several shelters exist to shelter hunters far from the base camp. In some cases it is the same; it is possible to use light tents for a flying camp which will make it possible to widen the range of action of the hunter.

A hunting guide assists each hunter. All hunts are on a 1x1 basis. The animals identify and judge themselves by listening to the slab but also with a good pair of binoculars. The approach is decided when a beautiful deer is identified.



SEASON AND CLIMATE

In the southern hemisphere, the slab begins in early March and we hunt in the park especially at the start of the season, that is to say the first 3 weeks of March. This is the period used for organizing expeditions.



ACCOMMODATION

The basic lodge is a magnificent mountain chalet with all the comforts one would hope for after returning from hunting.

In the mountains, shelters are rather shelters used by hunters and therefore more basic. Night under the tent. They will remain a precious shelter on the return from long walks or rides in the mountain.



EQUIPMENT

A warm down is essential. Semi-rigid mountain shoes, fleece clothing, gloves and a hat are the essentials to bring.

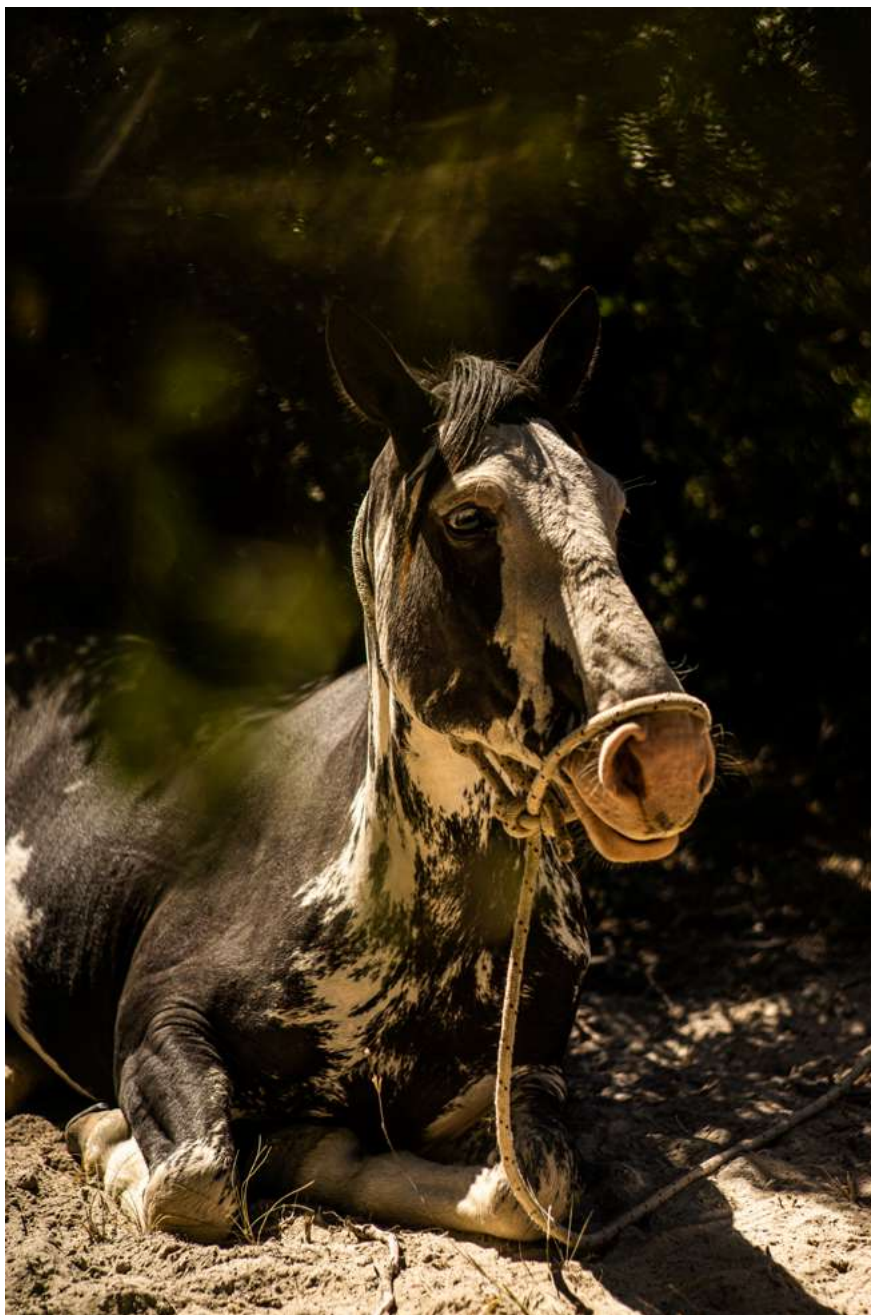
On the hunting side, a 300 or 8 x 68 S type rifle equipped with a scope set in DRO (Optimal Adjustment Distance) with the same batch of 150 or 180 grain bullets is close to the ideal necessary for this hunt. A good pair of binoculars is precious. Backpack, knives, cord, headlamp ... are still very useful small accessories.

04.03.2020 > 11.03.2020
CHACABUCO

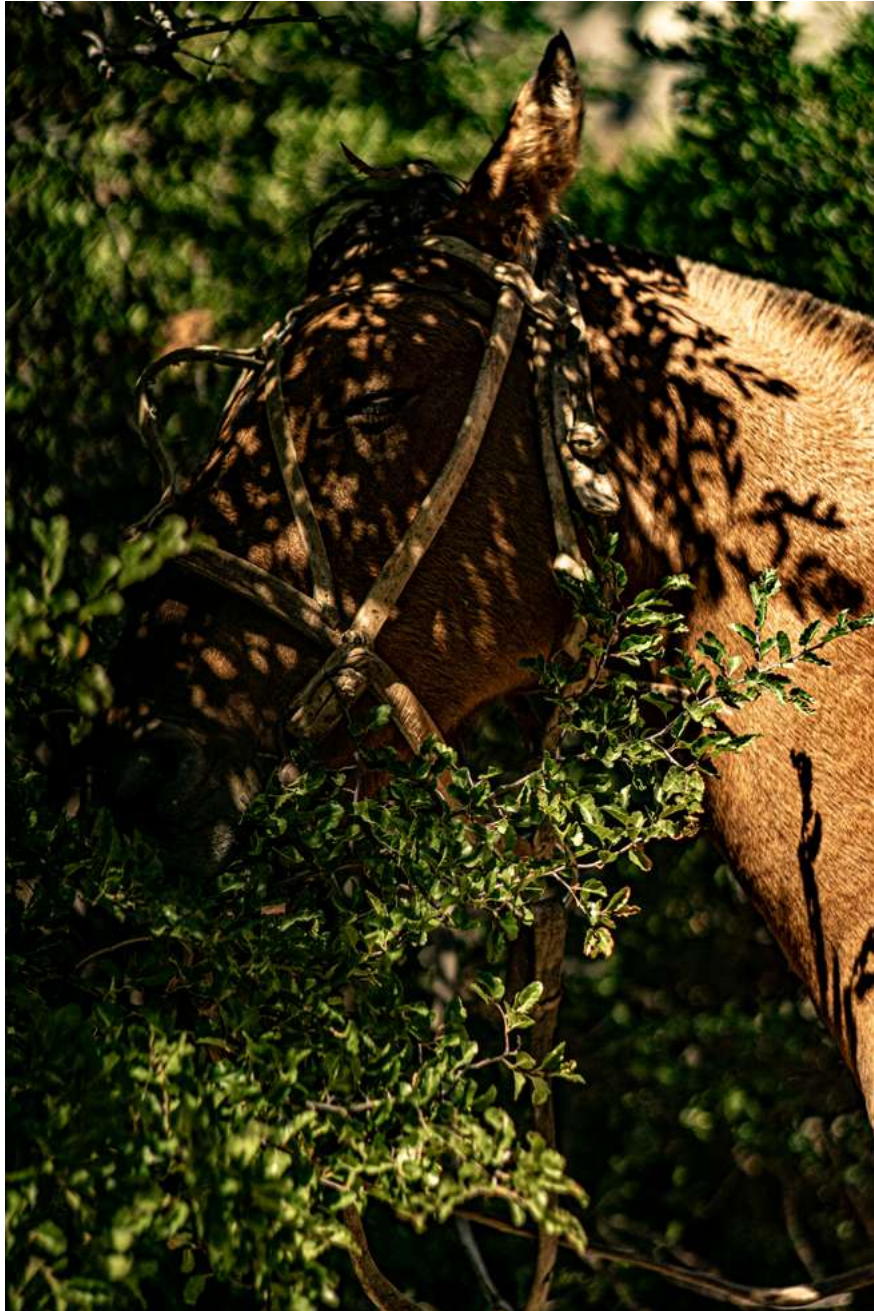




















































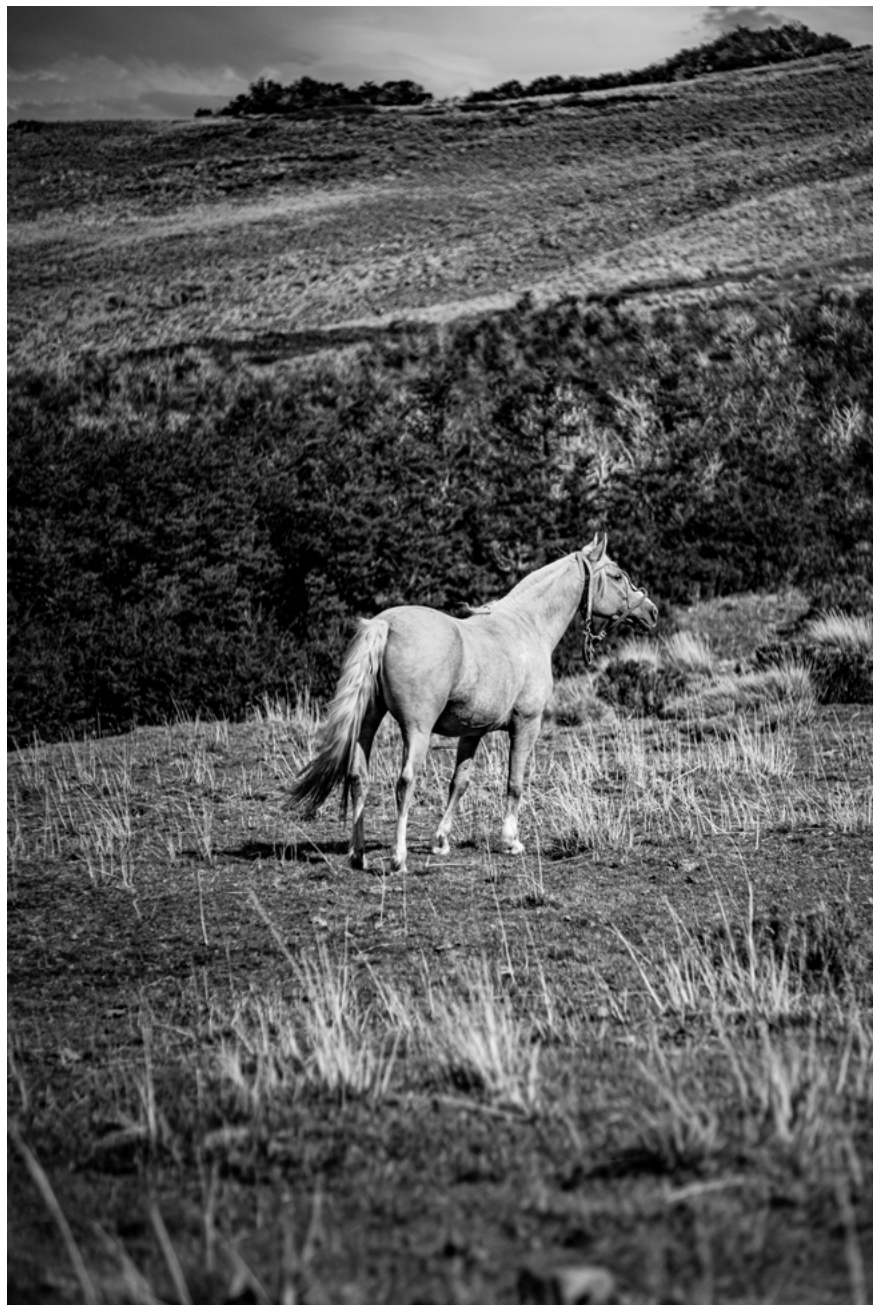










































































THANKS

BENOIT ERAUD
FREDERIQUE ERAUD
MATHIEU BRETON
DHD LAIKA
GABRIELLE
PATRICK
ALEXANDRE
LOUCAS
AMOR
CHICO
SWAROVSKI OPTIK
PARABOOT
BROWNING
MERKEL
WINCHESTER

